

FACULTY OF HEALTH & WELLBEING

RESEARCH & ENTERPRISE NEWSLETTER

FOREWORD

It is a pleasure to welcome you to the 5th Issue of our Faculty Research and Enterprise Newsletter.

This issue marks the end of another exciting academic year during which a great number of our Faculty colleagues continued to produce research publications and succeeded in being awarded external funding to conduct research projects that make significant impact in health and social care services, community wellbeing and welfare regionally, nationally and internationally. An Interesting highlight is the award of a NIHR Applied Research Collaboration Kent, Surrey and Sussex, a partnership of CCCU with key stakeholders in our region, which will offer great opportunities for collaborative research on vital issues facing health and social care over the next five years.

I hope you will enjoy reading this issue and I wish you all a relaxing summer!

Professor Eleni Hatzidimitriadou

Professor of Community Psychology and Public Mental Health
Head of Research and Enterprise

INSIDE THIS ISSUE

- News & Events.....2
- Our impact4
- Project Updates5
- Awards8
- Funding Successes 9
- Publications 11
- Seminars and Hub meetings ... 12

We would like to welcome

**Professor
Chris Burton**

**Head of School of Allied and Public
Health Professions
Professor of Health Services Research**

Chris trained as a Registered General Nurse and has a significant programme of research mainly in stroke, nursing and rehabilitation. His leadership in Implementation Research has been recognised by being awarded an Improvement Science Fellowship from the Health Foundation.

In the last few months we welcomed:

Dr Rachael Morris
DWELL & ADAPT Research Fellow

Nikki Price
DWELL Project Administrator

Joanna Apps
MOTION Principal Research
Fellow

SAVE THE DATE

**Faculty Research Funding
Workshop**
run by RIFU

Wednesday 25th SEPTEMBER
2-5pm

Refreshments and cakes/pastries

You will have the opportunity to discuss your project ideas and how to apply for funding

If interested, please reserve a place by emailing
FHWB.RKEOfficer@canterbury.ac.uk



CONGRATULATIONS!

Ceri Spain, RKE Officer
completed the London
Triathlon on 28th July 2019



**Canterbury
Christ Church
University**



CCCU Vice-Chancellor, Professor Rama Thirunamachandran, opens the new SCRABEL Laboratory at the Medway campus

NEW LOCATION FOR SCRABEL LABORATORY

SCRABEL, the Stem Cell Research and Bio-Engineering Laboratory, has moved to a new location on the University's Medway Campus.

Started by the University in 2015 as part of the Institute for Medical Sciences (IMS) the newly fitted lab will help to deliver quicker results, with increased accuracy, for research projects in advanced regenerative medicine.. A new team of researchers who joined the lab recently are taking forward exciting stem cell research projects on regenerative medicine and wound care.

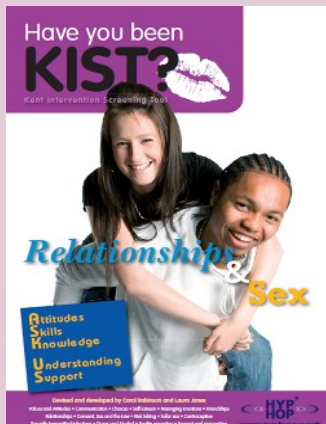
For more information about SCRABEL, please visit:

<https://www.canterbury.ac.uk/health-and-wellbeing/institute-of-medical-sciences/scrabel/stem-cell-research-and-bio-engineering-laboratory.aspx>

Child Health & Wellbeing

Research Hub Symposium - 26th June 2019

A half-day Research Hub event, organised by the Faculty's Child Health & Wellbeing Research Hub, brought together colleagues from across the Faculties of Health and Wellbeing and Education to present and discuss research, knowledge exchange and teaching related to children and families. The morning provided an opportunity for colleagues to present their ideas, recent work and plans in an informal and supportive environment. Contributors included:



◆ **Gayle Le Moine**, School of Nursing, Midwifery and Social Work & **Judy Durrant**, School of Teacher Education and Development - collaborative work that aims to promote interdisciplinary learning and teaching across the University relevant to children and families.

◆ **Dr Sally Robinson**, School of Public and Allied Health Professions - an overview of the Teaching for Life project, from its first conception as a response to the lack of information available to teachers about children with life limiting and life-threatening conditions

◆ **Karen Hynes**, School of Public and Allied Health Professions & **Cheryl Yardley**, School of Nursing, Midwifery and Social Work - presented emerging themes from an evaluation of an annual domestic abuse conference held at CCCU

◆ **Dr Eve Hutton**, School of Public and Allied Health Professions & **Stephen Webb** - presented findings from an on-line survey of parent carers views about the potential for greater use of electronic communication with therapists related to children with complex needs.

◆ **Prof Eleni Hatzidimitriadou**, Faculty of Health and Wellbeing - introduced the aims and scope of a newly funded EU INTERREG 2SEAS project MOTION (Mechanised Orthosis for children with neurological disorders)

◆ **Vicky Lander**, School of Nursing, Midwifery and Social Work - discussed her plans for training neonatal care nurses within the Faculty and the importance of simulation as a teaching and learning tool in this area of practice.



SIDNEY DE HAAN RESEARCH CENTRE FOR ARTS AND HEALTH

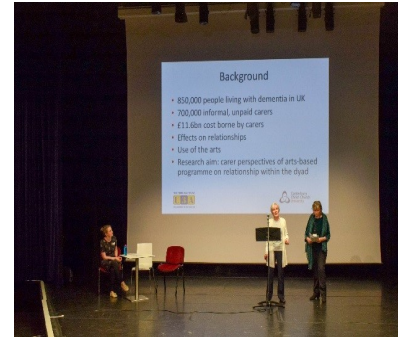
National Centre for Early Music event on Arts and Health for GP trainees, York, 12th June 2019

Prof Stephen Clift gave a keynote address as part of an innovative training workshop on Arts and Health for over 70 GP trainees at the National Centre for Early Music.



U3A/University of Kent Research Collaboration Showcase, Gulbenkian, Canterbury - 28th May 2019

Ann Skingley, Principal Research Fellow, and Helen West, Canterbury & District U3A, co-presented findings from ongoing Carers Create research, “Carer perspectives of a creative programme for people with Dementia and their carers on the relationship within the (carer and cared for) dyad”, at the U3A/University of Kent conference.



“Growing Research and Researchers” Inaugural Conference - Friday 21st June 2019
#GrowRes19 #YourResearchSelf



KMPT’s R&D department, in collaboration with CCCU School of Nursing, Midwifery and Social Work, held their inaugural pre-registration nursing conference ‘Growing Research and Researchers’ at Augustine House on the 21st June 2019. Designed with the aim of improving the research confidence and literacy of students in enabling them to see the importance of research and evidence based practice and transferring these skills into the workplace once qualified, saw 140 mental health, adult and midwifery student’s attend for a day of keynote speeches and workshops, delivered by internationally renowned nurses who have gone on to undertake research, namely **Dr Dan Bressington**, Assistant Professor Hong Kong Polytechnic University, **Dr Debbie Robson**, Kings College London, and our own colleagues, **Prof Doug MacInnes**, **Prof Kim Manley**, **John Gilmore** and **Gayle La Moine**.



Attendees reflected that the nursing profession is ever changing, with research being one avenue that is allowing nurses to expand the horizon of where their careers can go and surpassing the expectations of what nurses can achieve. This will be an annual event, ensuring that research remains a focus within pre-registration pathways.



International Clinical Trials Day

On 20th May 2019, Research Nurses and staff from **East Kent Hospitals NHS Foundation Trust** visited Augustine House to promote International Clinical Trials Day.

The venue provided an opportunity for conversations, information and network opportunities between researchers, students and staff members.

#bepartofresearch

www.nihr.ac.uk/
 bepartofresearch



SPARC (Supporting Progression in Academic Research Career)

SPARC is a very successful University programme with a focus on developing research strategy skills and delivering on individually negotiated outcomes. On the 15th of May, the 4th cohort of SPARC participants were welcomed to the programme during a very well-attended event. During the event, colleagues had the opportunity to reflect and plan the research element of their career supported by a mentor, a network of like-minded colleagues and access to time and resources for research.

As in previous years, a range of internal and external experts delivered Q&A and workshop sessions on a range of topics: REF, Open Access, Publication practices and strategies, Income Generation, Networking, Supervision and Project Management.

The 2018-19 Faculty SPARC colleagues and their mentors are:

- ◆ **Gary Gilkes**, School of Allied and Public Health Professions (mentor: Paul Lockwood)
- ◆ **Kay Lake**, School of Nursing, Midwifery and Social Work (mentor: Dr Jaqueline Wier)
- ◆ **Athene Lane-Martin**, School of Nursing, Midwifery and Social Work (mentor: Prof Doug MacInnes)
- ◆ **Tim Odell**, School of Nursing, Midwifery and Social Work (mentor: Dr Janet Melville-Wiseman)
- ◆ **Ann Price**, School of Nursing, Midwifery and Social Work (mentor: Prof Kim Manley)

If you are interested in knowing more about the programme or discussing your future involvement as a participant, a mentor or even just an observer, get in touch with **Dr Sabina Hulbert** in the Research Development office at sparc@canterbury.ac.uk or Sabina.Hulbert@canterbury.ac.uk

REF 2021 update

The CCCU Code of Practice has been submitted to REF.

An internal REF Panel of Assessors has been set up and the panel has started the assessment process for UoA3. Further development of the Impact Case Studies has also begun.

Writing for impact and influence workshops are planned for September and October in Medway and Canterbury. These will focus on authors' papers to help enhance benefit, influence, effect on people's lives and impact.

For any questions about REF 2021, please email

Prof Kate Springett, Faculty UoA3 coordinator, on kate.springett@canterbury.ac.uk

or **Emma Pole**, University REF Manager, on ref@canterbury.ac.uk

The University now has a link to useful REF information:

<https://cccu.canterbury.ac.uk/research-and-enterprise-development-centre/REF/ref-2021.aspx>

Paul Lockwood awarded Fellowship of the College of Radiographers

On Wednesday 4th July **Paul Lockwood** was awarded the



Fellowship of the College of Radiographers (FCR), an honorary title, at the Presidential Inauguration ceremony of the Society of Radiographers at One Great George Street in London.

The FCR is bestowed upon individuals who have made a significant contribution to the radiographic profession.

Many congratulations to Paul!

ADAPT

CCCU is leading the 'Training of Health Care Professionals in Assistive Technologies (AT)' element of the four year European funded [Interreg France (Channel Manche) England] ADAPT Project, which aims to empower disabled people through robotic technologies.



The CCCU ADAPT team launched the first Unit of training 'Foundations of Assistive Technology (AT)' in April 2019, initially to CCCU staff and students. The Unit will be launched to NHS staff once ethical clearance for the evaluation element has been obtained.

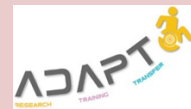


ADAPT 3rd UK Advisory Group meeting, June 2019

The third meeting of the UK ADAPT Advisory Group took place on 20 June 2019. Attendees including AT users, personal assistants, health and social care professionals and Faculty staff with relevant expertise provided valuable feedback on planned specialist AT training Units, which are under development and will be launched later in 2019.

Members of the CCCU ADAPT team travelled to Rennes, France on 3-4 July 2019 to host workshops with colleagues in France to further discuss and develop the training units and attend the project Technical Meeting.

You can follow the ADAPT Project on Twitter @CCCUADAPT
 For any queries regarding the project, please contact: adapt@canterbury.ac.uk



DWELL (Diabetes and WELLbeing)

DWELL is a European funded project (Interreg 2 Seas 2014-2020 Programme) which aims to empower patients with Type 2 diabetes in the UK, Belgium, France and the Netherlands to self-manage their condition and improve their wellbeing.



Delivery of the DWELL 12-week self-management programme for people with type 2 diabetes is now well underway at each of the five sites in the UK, Belgium, France and the Netherlands. The CCCU DWELL team are collecting and analysing data related to patient outcomes process evaluation and cost-effectiveness analysis. The final evaluation report will be published in summer 2020.

Kinetic Analysis hosted the second cross-border DWELL patient ambassador meeting and the third 'DWELL Stakeholder Symposium' at Avans Hogeschool in Breda (Netherlands) on 22 May 2019, which culminated in a trip through the city by bicycle to visit one of their delivery sites. This was followed by the DWELL Steering Group Meeting on 23 May 2019. Both events were attended by representatives of all partner organisations.



Dr Marlize DeVivo, Dr Rachel Morris and Sharon Manship visit Breda

You can follow the DWELL Project on Twitter @CCCU_DWELL
 For any queries regarding the project, please contact dwell@canterbury.ac.uk

CASCADE - Community Areas of Sustainable Care And Dementia Excellence in Europe



The Interreg 2Seas CASCADE project had a leadership change in mid-May when Research Fellows **Anne Martin** and **Dr Toni Wright** took over as joint leads, supported by **Professor Eleni Hatzidimitriadou**. **Professor Kim Manley** remains as an adviser and **Sarah Keeling-Smith** remains as Administrator. The cross-border project, with partners in Belgium, France and the Netherlands aims to develop and embed a financially sustainable model of integrated dementia care in local communities. In the UK, guesthouse like facilities are being constructed in both Dover – Harmonia Village, and Rochester – Harmony House, which will offer flexible therapeutic, residential and care at home services. These facilities, the first of their kind in the UK, represent a step change in the way dementia care is provided here. Both Harmonia Village and Harmony House hope to welcome their first guests this autumn.

The specific project objectives are:

- ◆ Develop and embed a holistic model of dementia care offering 40 beds for step up or down respite, rehabilitation and residential care between hospital and home care.
- ◆ Establish a centre of dementia excellence through telemedicine for quick access to specialist support and cross border consultations.
- ◆ Develop a learning package for anyone having contact with people with dementia to improve knowledge and skills in providing dementia care.
- ◆ Undertake a comprehensive evaluation study of the impact of the CASCADE model, its cost effectiveness and economic contribution to local communities.

Now half way through its four-year trajectory, **Anne Martin** and **Dr Toni Wright** have been busy writing the evaluation study protocol in collaboration with UK partners to submit for Health Research Authority (HRA) ethical approval in readiness for the first-round data collection. They have also recruited a Consultant Health Economist (**Dr Katerina Gousia**, University of Kent) to provide an economic analysis of the CASCADE model of care and a Consultant Statistician (**Dr Sabina Hulbert**, CCCU & University of Kent) to oversee rigour in the analysis of the large amount of quantitative data expected to illustrate project outcomes. A full time Research Fellow will join the team later in September 2019, to support fieldwork and data analysis.

The CASCADE project has won a place in the category ‘Modernising Health Services’ in the finals of the RegioStars Awards, which are Europe’s awards for the most innovate regional projects. The award results will be announced later this year.

You can follow the CASCADE Project on Twitter [@CCUCascade](#) For any queries regarding the project, please contact cascade@canterbury.ac.uk

There are monthly Harmonia Village Cuppa and Catch-up sessions that are open to all



East Kent Hospitals University NHS Foundation Trust’s Harmonia Village Dover, set to become the Centre of Dementia Excellence incorporating residential care, guesthouse with care facilities and a suite of telemedicine

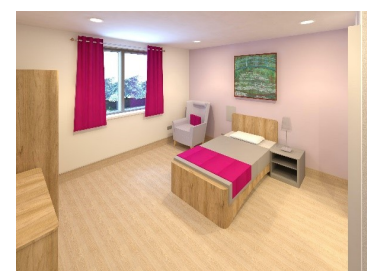


*Architectural art work showing what Harmonia Village will look like on completion
Site illustration images by HMY*

Medway Community Healthcare’s Harmony House



Architectural art work showing what Harmony House will look like on completion



Site illustration images by Medway Community Healthcare (MCH)

Evaluation of Community Activation Projects in Ebbsfleet garden city Healthy New Town

In 2016, NHS England introduced the Healthy New Towns Programme (HNT) to promote health and wellbeing in 10 selected ‘demonstrator’ sites. All sites subscribed to the ‘HNT philosophy’ of building healthier environments and delivering healthcare in new and more integrated ways through a holistic place-based approach. Ebbsfleet Garden City (EGC) in Kent was among the demonstrator sites. In March 2018, **Prof Eleni Hatzidimitriadou** with **Dr Rebecca Kent** and **Dr Alex Kent** (from School of Human and Life Sciences) were commissioned to evaluate the Community Activation Projects that were introduced as part of the NHS funded Ebbsfleet Healthy New Town (HNT) project. The evaluation study targeted four Community Activation projects funded by EDC: Edible Ebbsfleet; Digital Monitoring; Better Points; Arts and Culture. It lasted from August 2018 until February 2019.

The overarching aim of the evaluation was to provide insight into how current community activation initiatives offer opportunities for better health and wellbeing, positive behaviour change, and engagement with the built environment across the Ebbsfleet HNT sites and among both existing and new resident populations.

A mixed methods approach was adopted to explore process and outcomes of identified projects. Methods employed were an online survey of residents’ engagement with projects, Geographic Information System (GIS) analysis of physical activity data, interviews and focus groups with residents by applying the Most Significant Change (MSC) approach, a form of participatory monitoring and evaluation which involves collection of significant change (SC) stories emanating from project stakeholders, facilitators and participants. 56 residents took part in the resident survey and interviews were conducted with 9 project leaders, 10 project participants, 5 non-participating residents, and 2 EDC staff. Observations were conducted at 11 events or meetings and a focus group was held with stakeholders. Evaluation results suggest that the community activation activities introduced in the Ebbsfleet Healthy New Town sites have the potential to effect positive change in areas such as building social capital, increased awareness of healthy eating and living, motivation for physical activity and improved sense of general wellbeing. Key lessons identified through the evaluation are mainly focused on more effective use of existing community assets and linking up new projects to the needs of the existing communities in HNT sites.

A full report will be available shortly on the University CREATE research repository.

EVALUATION OF COMMUNITY ACTIVATION PROJECTS

EDIBLE EBBSFLEET:
People who took part in the project reported eating 'more healthily' and 'better connected to their community'.

COMMUNITY PROJECTS CAN HELP:
Build social capital, increased awareness of healthy eating and living.

TALES AND TASTINGS:
Helped bring communities together that had not previously met

BETTERPOINTS:
Encouraged its users to be more active and change their behaviours

RECOMMENDATIONS:

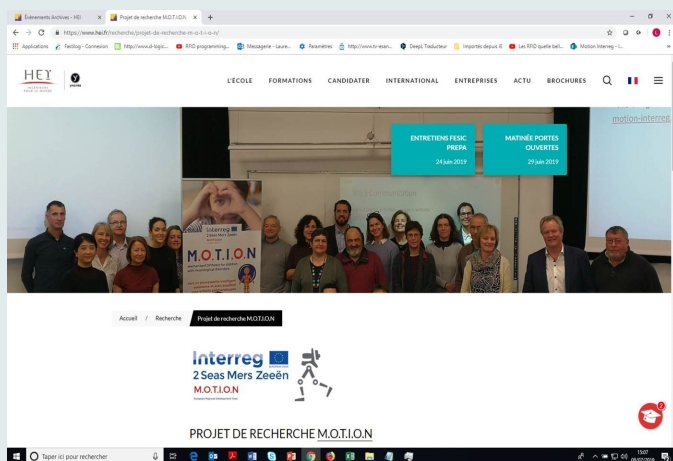
1. Collaborate with existing community groups
2. Co-design inclusive branding with the community

Infographic of key evaluation messages

MOTION

The ‘initiation phase’ of the project ended in May 2019, and work is now underway at CCCU, including the recruitment of project/research staff to support the project activities. The team with project partners completed the first deliverables, the technical and clinical specifications of the exoskeleton prototypes and the smart garment to be developed in the UK, France, and Belgium. Our team will be leading from September the development of an online survey to assess the training needs of healthcare professionals and parents of children with neurological conditions in the use of robotic rehabilitation technology.

For further information about MOTION, visit <http://www.motion-interreg.eu/>



Global Challenges Research Fund (GCRF) India Project



Esther Coren and colleagues from Kristu Jayanti College, Bangalore

This year, **Dr Annette King**, CCCU Director of Research, has been awarded GCRF (Global Challenges Research Fund) funding from the UN for the purposes of global development. The award is for a 3-year period, 2018-2021, and one of the 2 identified projects to be conducted as part of the award is led by **Esther Coren**, Reader, Sidney De Haan Research Centre (SDH) and School Of Nursing, Midwifery and Social Work. Esther will establish a development research-focused network in India in collaboration with colleagues in academia and non-governmental organisations (NGOs).

In March 2019, Esther travelled to Bangalore, Mysore and Chennai in Southern India to meet with academics and NGO practitioners to discuss the proposed network and invite colleagues to a symposium held in Bangalore on 29th June 2019. The outcomes of the conference

were agreed research topics to be explored and developed into collaborative funding bids on development priority topics, including, women and children’s rights, health services access in disadvantaged areas, sustainability and environment. Arts interventions are a high priority for some of the partners as well as some of the Indian funders, so congruent with the mission of SDH, such topics as arts work with school drop outs to develop enterprise were a focus. Further updates will be provided as the project progresses.

Please contact esther.coren@canterbury.ac.uk for further information.

3rd Early Career Researcher Festival

We held our 3rd ECR Festival with presentations and posters by researchers based in the Faculty. **Prof David Shepherd**, Deputy Vice-Chancellor, and **Debra Towse**, Pro Vice-Chancellor (Medical Education Development) & Dean of Faculty of Health & Wellbeing opened the festival. This year’s presentations were delivered by:

VICTORIA STIRRUP, School of Nursing, Midwifery and Social Work
“Organisational Support for Lived Experience Practitioners in an NHS Trust”

Dr GEMMA WELLS, School of Allied and Public Health Professions
“Using photo-elicitation to explore the occupational engagement of older women”

ATHENE LANE-MARTIN, School of Nursing, Midwifery and Social Work
“Knowledge and Perceptions of Mental Health and Mental Illness within the Faculty of Health and Wellbeing”

PhD Student at UN Conference

In May 2019, with support from the Faculty’s PhD Support Award, **Christine Locke**, PhD student, attended the United Nations Global Compact conference in Bonn. The



Christine, hosting a round table discussion at the UN Global Compact conference on the UN Sustainable Development Goals (SDGs)

award enabled Christine to connect localised PhD research ideas with the wider (international) Sustainable Development Goals.

Christine’s PhD topic is *“Empowerment and the intersection of inequalities among women in South England”*

PhD SUCCESS

Many congratulations to **Charlotte Epsley** who successfully defended her thesis entitled:

‘Singing for Adults with Respiratory illness: A Systematic Review and Evaluation of a Community Programme’





NIHR Applied Research Collaboration Kent, Surrey and Sussex (KSS ARC)

The NIHR has announced a £135 million investment in 15 new NIHR Applied Research Collaborations (ARCs), which will join up some of the country's best universities, leading innovators and local authorities to solve some of the biggest issues facing health and social care over the next five years.

The funding has been awarded to 15 partnerships covering every area of England, made up of health and care providers, commissioners, local authorities, universities, private companies, charities, and academics, who will work together to address specific health or care issues in their region. The funding will also support, facilitate and increase the rate at which research findings are implemented into practice.

The Kent, Surrey and Sussex bid involved a consortium of 35 organisations including CCCU, with **Prof Eleni Hatzidimitriadou** as CCCU Project Lead. The host NHS organisation was **Sussex Partnership NHS Foundation Trust**, and it was led by **Prof Stephen Peckham**, CHSS, University of Kent.

The 8 research priorities are:

1. SOCIAL CARE
2. STARTING WELL: EARLY DETECTION & INTERVENTION OF MENTAL HEALTH PROBLEMS IN CHILDREN & ADOLESCENTS
3. LIVING WELL WITH DEMENTIA
4. PRIMARY AND COMMUNITY HEALTH SERVICES
5. CO-PRODUCTION
6. PUBLIC HEALTH
7. DIGITAL INNOVATION
8. ECONOMICS OF HEALTH AND SOCIAL CARE

Canterbury Christ Church University will provide explicit support through PhD studentships and resources for our named researchers within the ARC themes, and related relevant colleagues, to support the work of the ARC.

A total of up to £15 million of additional NIHR funding will be available to NIHR ARCs to facilitate cross-ARC collaboration on identified national priorities for applied health and care research, to deliver a step change in national level impact.

Many congratulations to Stephen, Eleni and the KSS ARC team for this great success for the region!

“This is excellent news and is due to the wide spread support our proposal had from organisations and individuals cross the region. Our application was assessed against seven key criteria and the feedback from the selection panel is very positive”

Prof Stephen Peckham, KSS ARC Director

For more details see NIHR press release <https://www.nihr.ac.uk/news/new-nihr-applied-research-collaborations-to-tackle-the-biggest-challenges-faced-by-the-health-and-care-system/>

Looking for funding opportunities?

Don't forget the Research and Innovation **Funding Bulletins** are available on StaffNet to download and search.

Please contact rifu@canterbury.ac.uk if you have any bidding queries or have a look at our website:

<https://cccu.canterbury.ac.uk/research-and-enterprise-development-centre/finding-funding/funding-links-and-resources.aspx>

A SURVEY OF ELDERLY CARE FORENSIC IN-PATIENTS IN LONDON

Prof Doug MacInnes, School of Nursing, Midwifery and Social Work, has been funded by Oxleas NHS Foundation Trust to conduct a survey of Elderly Care Forensic In-Patients in London, to examine the number of elderly patients in secure settings and the places they are transitioning to.

The work will be carried out over a 12 month period and will lead on to a funding application to look at the factors that impact on a person's transition into and out of the secure service, as well as looking at how well their needs have been met to give a greater understanding of the factors important to ensure a successful transition for older service users.



THE DEVELOPMENT OF THE QUALITY, SAFETY AND TRANSFORMATION RESEARCH FRAMEWORK/STRATEGY ACROSS KENT AND MEDWAY

Professor Kim Manley CBE, Co-director England Centre for Practice Development (ECPD) and Associate Director Transformational Research and Practice Development, East Kent Hospitals University NHS Foundation trust (EKHUFT), and has begun work on The development of the quality, safety and transformation research framework/strategy across Kent and Medway.

Other colleagues involved from the Faculty include **Ann Price, Andy Buttery, Mary Brown and Dr Jacqueline Weir**.

SUICIDE ON THE RAILWAYS IN GREAT BRITAIN: A MULTI-DISCIPLINARY ANALYSIS



Dr Ian Marsh, Reader, School of Allied and Public Health Professions, has secured funding as part of wider efforts to reduce suicide on the railways, this project will carry out a programme of work focusing on railway suicide messaging, from multiple perspectives. The main aim is to generate new multi-disciplinary insights and actionable intelligence for the rail industry, via three interrelated projects:



Phase 1: In-depth analyses with individuals who have contemplated or attempted suicide by train, to explore from an anthropological and social psychological perspective, the ways in which railway suicide is constructed in these accounts.



Phase 2: A series of workshops/consultation events with individuals bereaved by suicide, rail staff and clinical and academic experts to discuss railway suicide, some of the myths and messages surrounding it and the ways in which these might be perpetuated and/or challenged via formal and informal messaging.



Phase 3: Consult individuals with lived experience of suicidality about the findings and implications of the earlier phases of work.

The project brings together expertise from a team of researchers at SOAS and Middlesex University with CCCU as the lead, and links to CCCU suicide prevention work currently ongoing at a university (the suicide-safer universities project), local (Kent and Medway STP suicide prevention projects), and national (projects with Network Rail and Samaritans) level.

RECENT PUBLICATIONS BY FACULTY COLLEAGUES

- Chung, P. (2019)** Experiences of older people with dementia: homecare enablement to support transitions in daily life at home. *British Journal of Occupational Therapy*.
- Dias, N., Ribeiro, A., Henriques, A., Soares, J., Hatzidimitriadou, E., Ioannidi-Kapolou, E., Lindert, J., Sundin, O., Toth, O., Barros, H. and Fraga, S. (2019)** Intimate partner violence and primary care and emergency use: the role of informal social support. *Health and Social Work*.
- Hillier-Brown, F., Thomson, K., McGowan, V., Cairns, J., Eikemo, T., Gonzalez, D. and Bambra, C. (2019)** The effects of social protection policies on health inequalities: evidence from systematic reviews. *Scandinavian Journal of Public Health*.
- Hjelmeland, H., Jaworski, K., Knizek, B. and Marsh, I. (2019)** Problematic advice from suicide prevention experts. *Ethical Human Psychology and Psychiatry*, 20 (2). pp. 79-85.
- Jaheer, H., Shetty, A. A., Choi, N. Y., Kim, Ki-Won, Thirumal, S., Song, J., Kim, K., Chun, Y. and Kim, S. J. (2019)** Preliminary results of high fibular osteotomy (HFO) and cartilage regeneration procedure for medial compartment osteoarthritis of knee with varus deformity. *Regenerative Therapy*, 10, pp. 112-117.
- Lockwood, P. and Pittock, L. (2019)** Multi-professional image interpretation: performance in preliminary clinical evaluation of appendicular radiographs. *Radiography*. pp. 1-13.
- Martin, A. (2019)** An acquired or heritable connective tissue disorder? a review of hypermobile Ehlers Danlos Syndrome. *European Journal of Medical Genetics*.
- Martin, A. and Manley, K. (2019)** Developing an integrated career and competence framework for whole systems approach to urgent and emergency care delivery. *International Emergency Nursing*.
- Mbah, M. and Fonchingong Che, C. (2019)** University's catalytic effect in engendering local development drives: insight into the instrumentality of community-based service learning. *Journal of Sustainable Development*, 12 (3). pp. 22-34.
- Parrott, J., Houben, F., Visser, R. and MacInnes, D. L. (2019)** Mental health and offending in older people: future directions for research. *Criminal Behaviour and Mental Health*.
- Price, A. M., Brysiewicz, P., Eggenberger, S. and Naef, R. (2019)** Engagement of families in ICU from the nursing staff perspective. Paper presented at: *British Association of Critical Care Nurses conference*, 16-17th September, Edinburgh.
- Simaan, J. and Nayar, S. (2019)** Editorial - WFOT Special Issue. *Journal of Occupational Science*, 26 (3). pp. 337-340.
- Simaan, J. and Shoba, N. (2019)** Global South perspectives on social justice. Paper presented at: *The Society for the Study of Social Problems*, Annual Meeting, 9-11 August, New York.
- Visser, R., MacInnes, D. L., Parrott, J. and Houben, F. (2019)** Growing older in secure mental health care: the user experience. *Journal of Mental Health*.
- Wells, G. (2019)** Childfree women as occupational beings. Paper presented at: *Royal College of Occupational Therapy Conference 2019*, 17th - 18th June, ICC Birmingham.
- Dingle, G., Clift, S., Saoirse Finn, S., Gilbert, R. et al., (2019)** An agenda for best practice research on group singing, health, and well-being. *Music and Science*.
- Poulos, C., Poulos, R., Clift, S., Opher, S. et al. (2019)** Arts on prescription for community dwelling older people with a range of health and wellness needs, *Health and Social Care in the Community*. 27, 483-492.

LUNCHTIME RESEARCH SEMINAR SERIES

*** SAVE THE DATES ***

The Faculty Lunchtime Research Seminars series continues in the next academic year.

Please save the dates and look out for further information on speakers and venues.

16th October 2019	15th January 2020	22nd April 2020
13th November 2019	19th February 2020	20th May 2020
4th December 2019	18th March 2020	17th June 2020

The seminars will run from 12:30—13:30 with the opportunity to remain for networking until 14:00.

Prior to the seminar, a light lunch will be offered at 12:00.

To reserve a place, please email FHWBRKE.Officer@canterbury.ac.uk

FACULTY RESEARCH HUBS

Faculty Research Hubs continue to meet and welcome new members at any stage of their research career

Hubs meet regularly, and have a dedicated Blackboard area for members to share research profiles, meeting notes and any other resources that may be of interest to colleagues with similar research interests.

If you wish to join any of the hubs, please contact FHWB.RKEOfficer@canterbury.ac.uk

RESEARCH HUB	LEAD
Education for Health & Social Care Professionals	Julie Taylor & Dr Jacqueline Wier
Care for Long Term Conditions & End of Life Care	Prof Eleni Hatzidimitriadou
Service User & Carer Involvement	Dr Bob Cecil
Mental Health	Prof Doug MacInnes
Arts & Health	Prof Stephen Clift
Practice Development, Innovation & Workforce Development	Prof Kim Manley
Child Health & Wellbeing	Dr Eve Hutton
Clinical & Medical Sciences	Paul Lockwood
Social Inclusion & Health Inequalities	Esther Coren



If you have content for the next issue of the Faculty RKE newsletter, please contact FHWB.RKEOfficer@canterbury.ac.uk