

Unitemps intelligent staffing solutions

# Client information

---



Canterbury  
Christ Church  
University

Ethical • Quality • Community

**UNITEMPS**

[www.unitemps.com](http://www.unitemps.com)

# What do you need from your recruitment partner?

---

**Unitemps stands apart in the recruitment sector as a truly unique proposition. Over the last 21 years, we have listened to and worked with over 1000 client organisations within the UK. We have honed our recruitment services to be flexible and solution driven.**

## Our different working ethos

Unitemps is different to most other employment businesses in both culture and model. Unlike commercial competitors, we prioritise client experience over sales targets. Our staff do not work on commission and are instead driven by providing an excellent service. We provide solutions, not prescriptive processes.

## Our three pillars

Everything we do, from top to bottom, is built upon and guided by our three pillars:

### **ETHICAL. QUALITY. COMMUNITY.**

This ethos has seen us successfully place thousands of candidates with employers throughout the country in multiple sectors and industries, and we continue to grow year on year.

## Our complete recruitment solution

Whatever our clients need, we can provide. Our sector knowledge is broad but in-depth. Unitemps supports clients within industry, commerce, public sector and education. Our solutions include temporary, permanent, full and part-time, ad hoc and flexible, internships and more. From one hour shifts to full-time work, we have the network and a truly unique candidate base to fill assignments in many cases on the same day, with the right candidate, first time.

We can provide skilled and un-skilled candidates that are ambitious and ready to make an impact within your business. Our proven systems help to streamline the recruitment process on your behalf, handling everything from job adverts, applications and shortlisting to timesheets, payroll and legislative compliance.

# Why work with us?

---

## We tailor our service to you

Our recruitment solutions are tailored to you. We hand pick candidates with the skills, experience and personality relevant to both your company and role.

## We will get you connected

You will have access to a truly unique database of over 100,000 active candidates throughout the UK.

## We're more than just recruiters

Born and nurtured in the UK higher education sector, Unitemps has a unique viewpoint on solutions required and provided within the recruitment market compared with our competitors. In that sense, we stand apart. Our experienced Recruitment Consultants have the background to understand your business needs and find you the best talent on the market. In addition, we can help advise you on your recruitment strategies.

## We will keep you compliant

We have a dedicated compliance team that will ensure that you're kept legislatively compliant, mitigating any risk throughout the process.

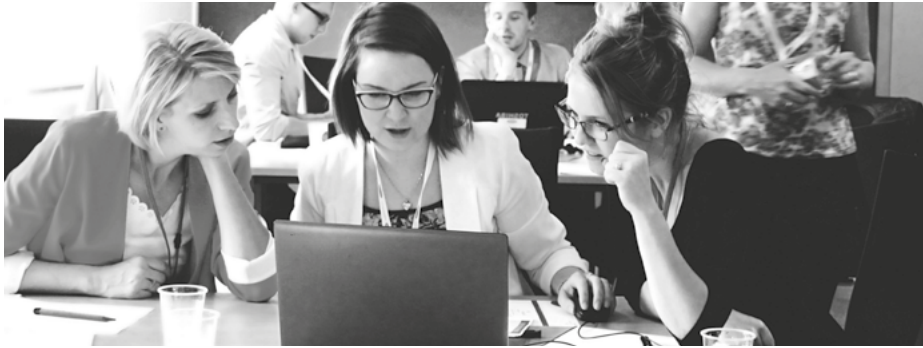
## We offer the complete recruitment solution

We can assist your needs and find candidates from a one-hour assignment to a permanent assignment throughout most of the UK and internationally. We construct the right solutions for your needs.

## We're efficient

Our state-of-the-art online systems help streamline the recruitment process and manage everything from job adverts, applications and shortlisting to timesheets, payroll and legislative compliance.

## About us



Unitemps is a university-owned complete recruitment solution that is changing the way employers recruit into their businesses through its ethical, quality and community approach. Originally established by the University of Warwick to meet the specific challenges of employment in the higher education sector, Unitemps has been helping students from the University and candidates from the wider community find the right jobs, helping clients find the right people since 1997 and growing year on year.

A unique campus-based office network gives Unitemps access to a large pool of motivated candidates from the student population, as well as graduates and skilled workers from the local area.

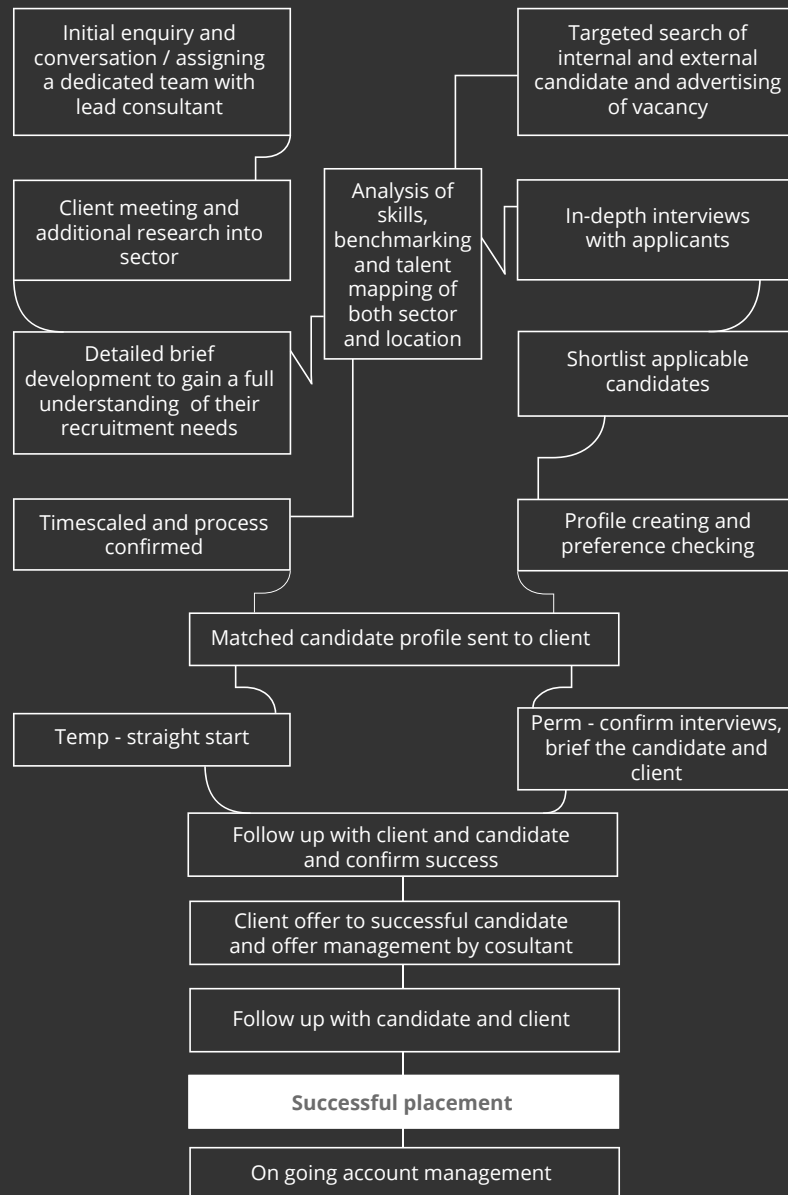
With our office network covering numerous sites throughout the UK, our consultants have the best opportunity to contact candidates from all over the world. This ensures that we can deliver on our promise to supply quality staff almost anywhere in the UK at any time of the year, even at short notice. Unitemps combines community-orientated philosophy with efficient and professional services. Our staff are not paid commission, allowing them to focus on excellent customer service and delivery. All revenues generated are reinvested into the academic institutions and campus facilities helping the students of tomorrow.

The Unitemps team is dedicated to providing our clients with the best available talent for their temporary and permanent staffing needs.

**Over 3.15 million hours worked in the last calender year**



# The Unitemps process



# Unitemps CCCU



**Unitemps is Canterbury Christ Church University's recruitment service to students, graduates, and the community. Unitemps offers part-time roles, internships, placements, and full-time work opportunities both within the University and in the local area.**

Benefit from the creative thinking and fresh perspectives of our students and graduates. With a student population of around 15,000 – many of whom are based in Kent and Medway – we can work in partnership with you to attract the best talent for your business.

The Unitemps branch is based in Augustine House in Canterbury, the University's main library. The branch also works with candidates from the local community and is managed by a dedicated team who will help you find bright, reliable, and motivated candidates to meet the business need.

The University's vision is to be recognised as a leader in education, research and enterprise that supports the South East region's growth and economy, building on our heritage as a globally connected, dynamic and innovative University, delivering an excellent and inclusive experience that provides enterprising, professional graduates.

Canterbury Christ Church University is a member of the Unitemps franchise network, established by Warwick University in 1997. Unitemps has been at the forefront of the sector as the business has grown from a single branch to the pioneering office network that exists today. Uniting experienced recruitment consultants and human resources professionals with detailed knowledge of the higher education sector.

If you have any questions about our services or a recruitment need do not hesitate to contact us at [unitemps@canterbury.ac.uk](mailto:unitemps@canterbury.ac.uk).

# Unitemps CCCU

## Canterbury Christ Church University

Augustine House  
Rhoda's Town  
Canterbury  
CT1 2YA  
01227 922204  
[unitemps@canterbury.ac.uk](mailto:unitemps@canterbury.ac.uk)

4270.02.21