

Accommodation at Canterbury Christ Church University

Living here.



Living in University accommodation.



Finding the right type of accommodation is essential to settling into your new life at university. The Accommodation Office offers you the opportunity to find the right accommodation for you at an affordable price. These pages are designed to give you a guide to the University accommodation available at the Canterbury and Medway Campuses.

We have included a selection of testimonials from our students who have lived in our accommodation.

Please visit canterbury.ac.uk/virtual-open-day and scroll down to our accommodation video to see where you could be living.

You can also visit canterbury.ac.uk/accommodation for 360 room views.

We can offer you:

- Accommodation at all campuses
- Choice of en-suite and shared living accommodation
- 24 hour security
- All utility bills included in the rent
- WI FI internet with speeds of up to 100mbps
- Free personal contents insurance

Please note:

- All our accommodation is smoke free
- Students are expected to clean their own rooms, bathrooms and kitchens
- Many sites have a payable self-service laundrette



Accommodation Guarantee

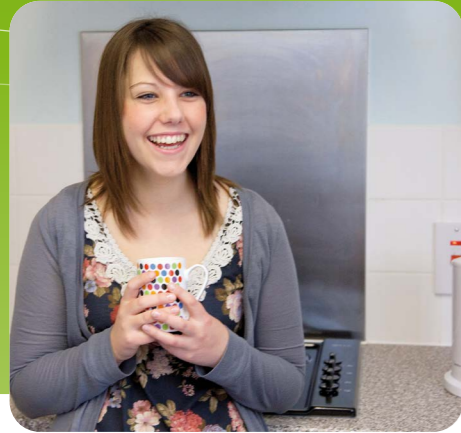
You are certain of a place in University accommodation provided that you:

- Are in your first year of study as an undergraduate or international postgraduate student
- Have firmly accepted an offer of a place of study at Canterbury Christ Church University
- Have submitted a completed application form by the **31 July** deadline



Canterbury Christ Church University is signed up to The Universities UK Code of Practice for the Management of Student Housing. The Code assists those managing student accommodation by setting out the main elements of good management practice.

“ I feel very happy, safe and comfortable within the accommodation. The security staff are always helpful and we have cleaning inspections weekly. ”



Important

It is important that you consider your preferences carefully as, due to high demand for some accommodation, you may not receive an offer of your first choice.

For up to date accommodation prices please visit our website canterbury.ac.uk/accommodation

TIP: Use the government website gov.uk/student-finance-calculator to get an idea of the funding available to you and help you choose the accommodation to suit your budget!

Key dates to note

As soon as you have an Unconditional Firm (UF) or Conditional Firm (CF) offer of a place at Canterbury Christ Church University you are eligible to apply for accommodation when the application lines are open.

Once you have decided which accommodation you are interested in, apply online from early Spring at canterbury.ac.uk/accommodation Accommodation offers are sent out to students after mid-August.

When you have completed the online application you will receive an email confirmation. The email will be sent to the address you provide in your application, so if you do not receive this you should contact the i-zone without delay on 01227 922222 or email i-zone@canterbury.ac.uk

We guarantee university accommodation for all students who apply by 31 July deadline.

If we are unable to offer you university accommodation, we will signpost you how to find accommodation at your chosen campus. The city also has a wealth of private accommodation.

For Medway click here for details of the Council's accredited landlords and advice.

medway.gov.uk/info/200154/housing_options/110/student_accommodation

Students with disabilities

We have adapted rooms and kitchens suitable for wheelchairs users, mainly at Petros Court and St Georges. Some also have aids and adaptations. You are welcome to check out the facilities before you make your choice.

Applicants with disabilities and/or complex personal care needs who require University accommodation are advised to contact Student Support and Wellbeing at the earliest opportunity.

If you need a resident personal carer, the University can provide a room on campus. You will need to ensure that the cost of the carer's room can be met.

Catering

All our accommodation is self-catering. You can upload money to our catering smart card and use in our catering locations. Extra credit is also added from us. If you pay your accommodation fees for the year up front, you will get £250 back onto your smart card for free.

Study bedrooms

All rooms are single occupancy study bedrooms either grouped into houses or flats or arranged along corridors with shared facilities. en-suite rooms are available at most of our sites. Each study bedroom is generally furnished with a bed, wardrobe, desk, chair, drawers and bookcase. You will need to bring your own towels, bedding, bed linen, crockery, cutlery and cooking utensils.

Security

All Canterbury Christ Church University accommodation is covered by 24 hour security, either on site or within a phone call away. Our Security Caretakers are the first point of contact for any issues you may have.

SafeZone is a safety app which Canterbury Christ Church University is making available to all its students and staff at all its campuses. The app allows you to alert University Security if you ever need urgent assistance, first aid or if you have an emergency while on campus via your mobile phone.

Go to canterbury.ac.uk/our-students-ug-current/support-services/health-and-safety/safety-support-and-safezone-app to download the app to your smartphone.

Petros Court, Rhodaus Town.



Petros Court is our latest development of 418 en-suite rooms in five buildings located behind the University's award-winning library at Augustine House. This new addition to the University's accommodation offers flats with up to eight bedrooms, which share a spacious kitchen/dining area furnished with sofas and televisions.

Petros Court is fully access controlled and consists of five buildings located around two landscaped courtyards. The courtyards provide attractive and safe social spaces for residents and their guests.

Facilities

- 418 en-suite study bedrooms with 4ft beds
- Modern kitchen facilities with white goods
- Landscaped courtyards
- Payable laundrette
- Internet
- Bike storage
- 24 hour security and secure access
- 12 adapted and semi-adapted rooms
- Lift to most blocks

“I feel living here has made my first year at uni a lot more stress free, enjoyable, and relaxing! The staff have been pleasant and always willing to help, and the communal areas have made socialising easy, lessening the worries of meeting new people on the first few days!”



As part of our ongoing commitment to fire safety and the welfare of our students, we are undertaking a programme of work at Petros Court during the current (2022/23) and next (2023/24) academic year to ensure that the materials on Petros Court meet the highest safety standards.

This work began in January and will then continue on a block-by-block basis with block D (February-August), and block E (March – September) taking place in this academic year. Work will take place on blocks A, B and C over the course of the next academic year.

The internal spaces are not affected by these works and a number of measures have been put in place to minimise disruption:

- Detailed construction health and safety plans
- Building work will be restricted to working times
- All private windows close to building works will be screened using an easy peel privacy film
- Building work will be undertaken in a phased way, on a block-by-block basis to minimise the disruption to residents;
- A dedicated area on the first floor of Augustine House has been provided as a quiet study space

Site registration with the [Considerate Constructor Scheme](#) and all contractors will follow a code of conduct to respect our residents

St George's Centre.



St George's Centre, above the Students' Union, has over 200 en-suite rooms arranged in flats of up to eight students; each flat will have a communal living and dining area with television. The accommodation is arranged around two courtyards, giving students a private and contemporary landscaped area to meet and socialise.

This accommodation is ideally located in the centre of Canterbury, offering the residents easy access to all the University buildings in Canterbury.

Facilities

- 200 en-suite study bedrooms with 4ft beds
- Modern kitchen facilities with white goods
- Two landscaped courtyards
- Payable launderette
- Internet
- Bike storage
- 24 hour security and secure access
- 4 adapted rooms



Dover Street.



Our accommodation on Dover Street is perfect for mature students or postgraduates. Students with families can also rent a whole house. There are 10 houses in total.

Facilities

- Three bedroom houses with mix of 3ft or 4ft beds
- Modern kitchen facilities with white goods
- Free high speed WiFi internet
- Enclosed courtyard for residents only
- Bike storage
- 24 hour security

7 Vernon Place.



7 Vernon Place is located 4 minutes walk from Augustine House, and 2 minutes from the Students' Union.

If there is a need we may allocate one wing or the whole building as alcohol free. When living in an alcohol-free accommodation you, or your guests, are not permitted to drink alcohol anywhere on the premises.

Facilities

- 26 study bedrooms with a mix of 3ft and 4ft beds
- Shared kitchens and bathrooms
- Modern kitchen facilities with white goods
- Payable laundry facility
- Free high speed WiFi internet
- Bike storage

Lanfranc House.



Lanfranc House is situated within the Northgate area of Canterbury and within the City's historic King's Mile. It is a five minute walk from the main campus. An attractive, purpose built property designed to blend in with historical surroundings, it comprises both flats and houses for 3 to 7 people.

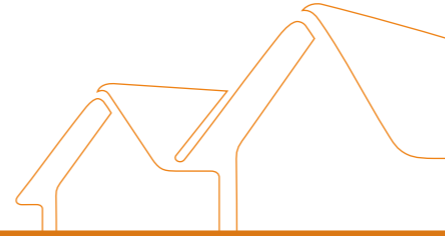
Facilities

- 212 en-suite study bedrooms
- Modern kitchen facilities with white goods
- Large central grass courtyard
- Payable launderette
- Free high speed WiFi internet
- Limited chargeable car parking
- Bike storage
- 24 hour security



“I very much enjoyed living in Lanfranc House because of the convenient location – very close to the city centre and University. The management, Security Caretakers and Housekeeping have all been nothing but nice and helpful.”

Parham Road Student Village.



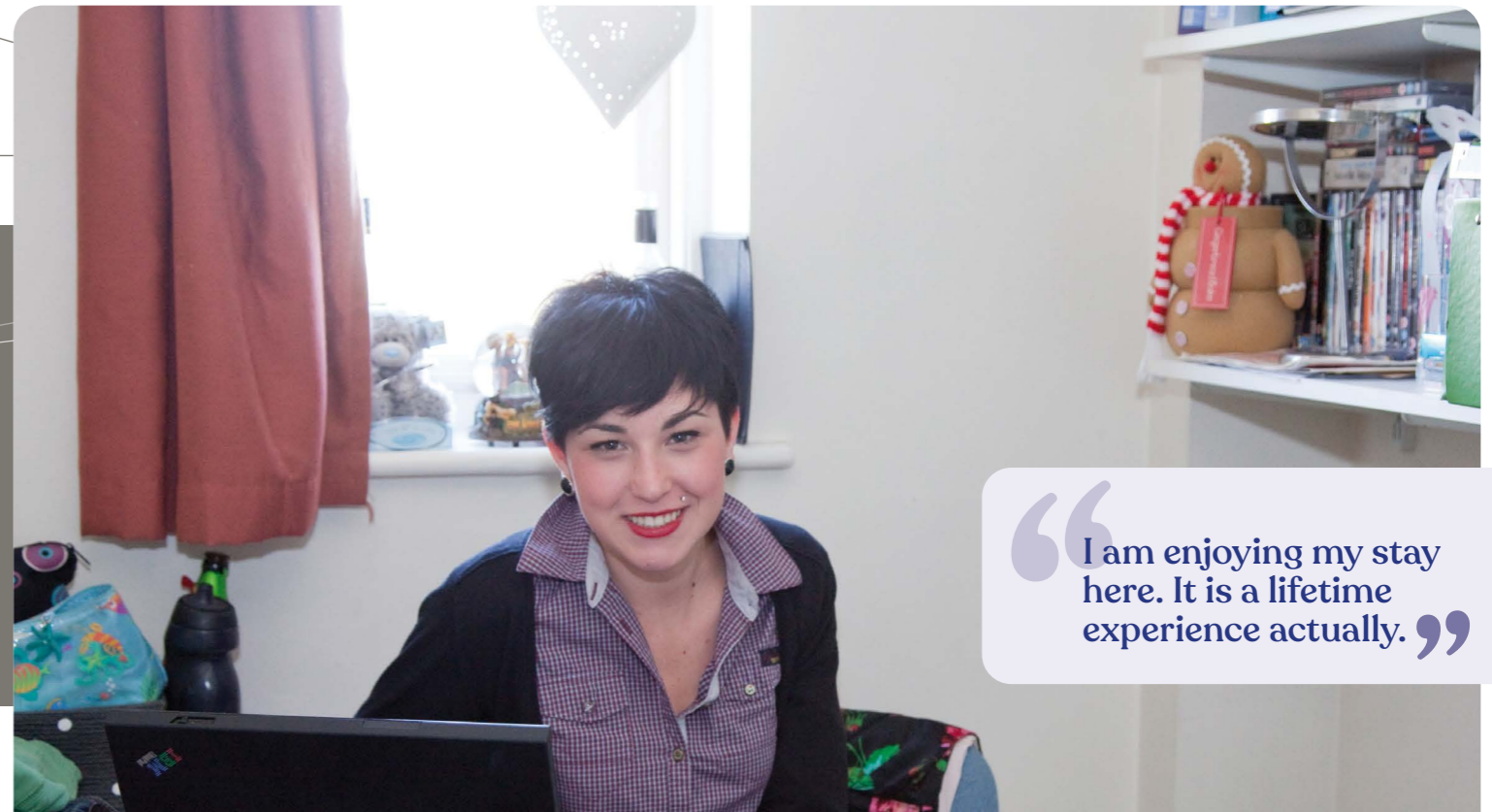
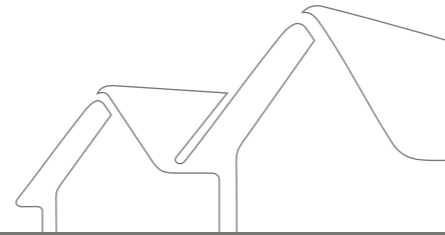
Parham Road Student Village is purpose built student accommodation. The site consists of a mixture of houses and flats. Studio flats and one bedroom flats suitable for mature students and couples are also available. It is located within a 15 minute walk of the main campus.

Facilities

- Houses and flats for up to 6 people, wide variety of rooms and sizes
- Mixture of en-suite and non en-suite accommodation
- Self contained flats for couples or single occupancy
- Fully equipped kitchen and laundry facilities
- Either central courtyard or private garden
- Free high speed WiFi internet
- 24 hour security reception
- Limited chargeable car parking by request only
- Bike storage

“**Fabulous accommodation, very clean and warm and the rooms are all very good sizes. The kitchen and living room are absolutely lovely and are well sized. I had a fantastic time living here.**”

Pin Hill.



“ I am enjoying my stay here. It is a lifetime experience actually. ”

Pin Hill is situated two minutes' walk from Augustine House and the city centre and 10 minutes from the main North Holmes Road Campus. The site consists of five flatted blocks overlooking the city walls and is located opposite Canterbury East Station.

Facilities

- 156 study bedrooms including 40 en-suite
- Flats for 2 to 8 people
- Modern kitchen facilities with white goods. Kitchen sizes vary based on number of people sharing the flat
- Payable launderette
- Free high speed WiFi internet
- 24 hour security and secure access
- Limited secure chargeable car parking available by request only
- Bike storage
- Communal lounge space for residents



Large kitchen / diner in Benson en-suite accommodation



Holmes Court.



The City Halls are situated at various sites across Canterbury, close to both the University and the city centre.

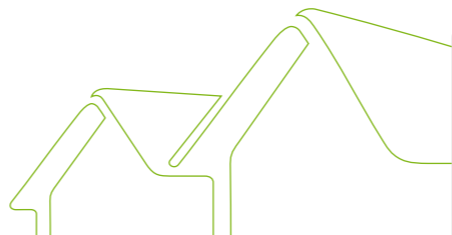
Holmes Court is located 2 minutes walk from main campus.

For full details of their locations please refer to the map in this booklet or our website canterbury.ac.uk/asset-library/locations/accommodation/canterbury-accommodation-map.pdf

Facilities

- 20 study bedrooms
- Shared bathroom and kitchen facilities
- Two adapted en-suite study rooms available for students with special requirements
- Modern kitchen/diners with white goods and washing machine
- Free high speed WiFi internet

“Cheerful calm environment, good housemates, very close to the Uni and city.”



University Houses.

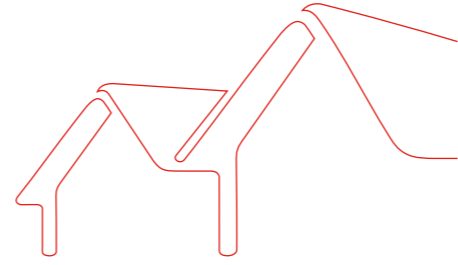


Facilities

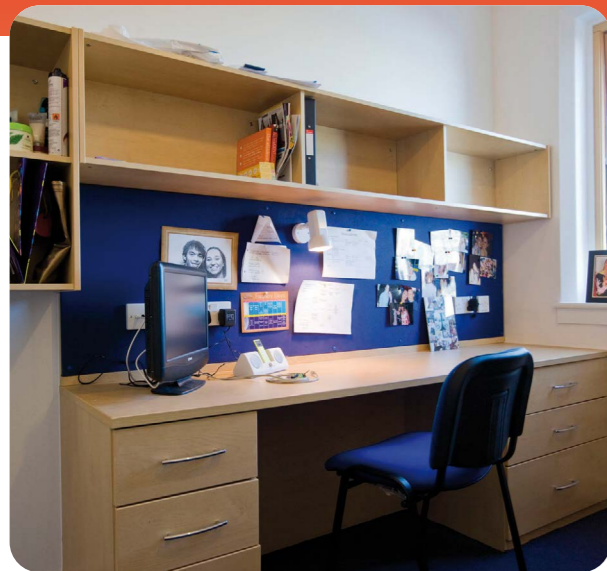
- 64 single occupancy study bedrooms of various sizes
- Shared bathroom and kitchen facilities
- Fully equipped kitchen
- Payable laundry facilities provided on main campus just around the corner
- Free high speed WiFi internet
- Gardens

Our University houses offer you a more affordable place to stay.

With up to five students sharing facilities, these houses are very convenient, 2 minutes walk to the main Canterbury Campus and all the lecture theatres and campus facilities.



Pier Quays Medway Campus.



Facilities

- En-suite study bedrooms
- Fully equipped kitchen facilities
- Vibrant social spaces
- Payable launderette
- Internet
- 24 hour security



Pier Quays student residential development at Medway provides student accommodation for the University. Pier Quays is a purpose-built residence located just 10 minutes' walk from the Universities at Medway Campus. The accommodation is shared with the University of Kent, with rooms available to Christ Church students. Pier Quays has its own social areas, launderette, Tesco Express store, Subway, Domino's Pizza, as well as a bar and bistro. Pier Quays offers Medway students contemporary bedrooms in a busy and student friendly environment. The rooms are grouped in flats of 6 or 8 students with shared communal lounge and a fully equipped kitchen. The accommodation is provided by Unite Students and your contract will be direct with them including payments. They will require a deposit. For more information see our website pages.

If you decide you would like private rented for your second and third years, we advise you to use Medway Council's accredited landlords scheme.

Click here for more information and advice:
[medway.gov.uk/info/200154/housing_options/110/student_accommodation](https://www.medway.gov.uk/info/200154/housing_options/110/student_accommodation)

Private sector housing.

Our city locations.

Map of Canterbury city centre and Canterbury Christ Church University locations

Need some help?

See what help is available to you when looking for your off-campus student home.

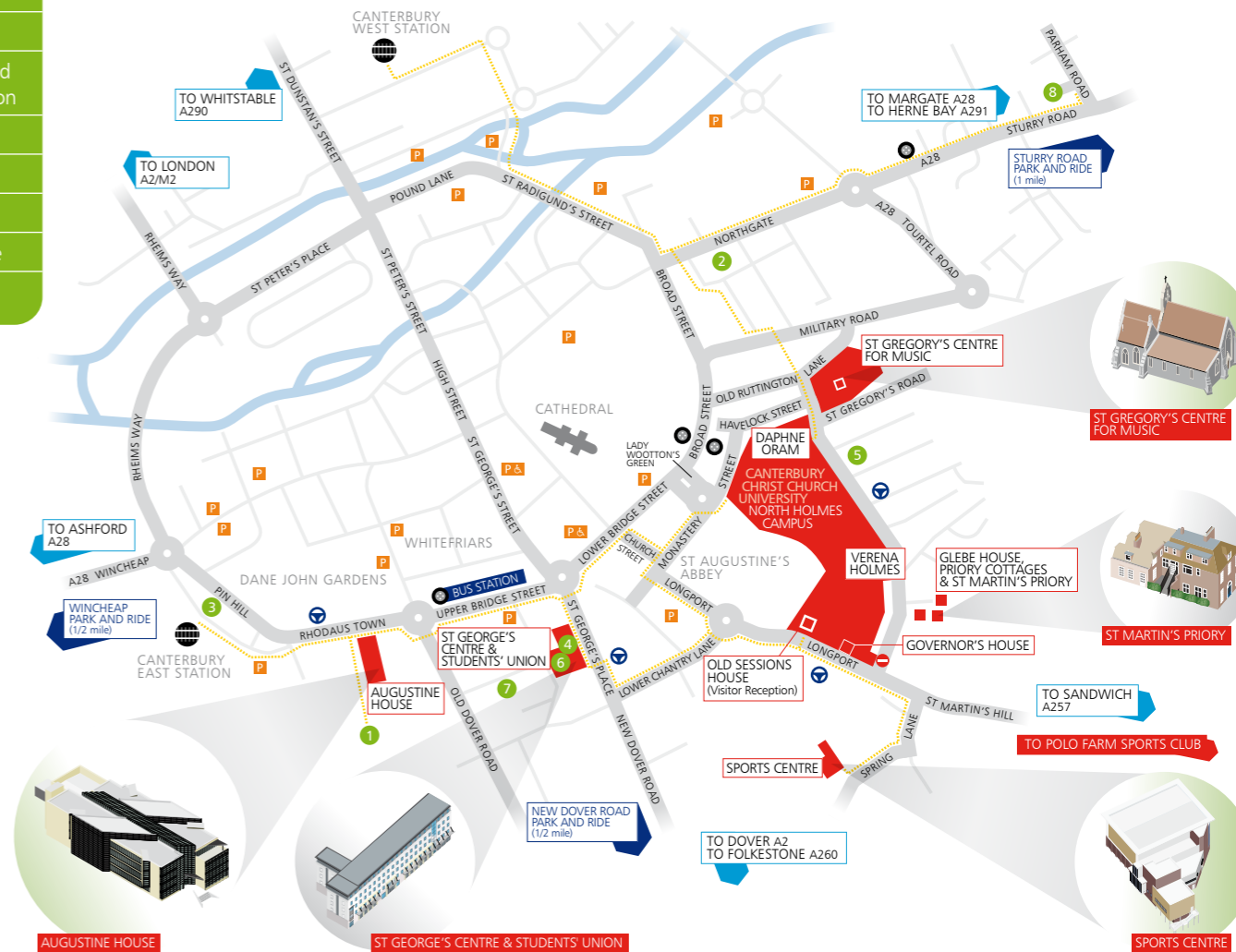


● Student accommodation

- 1 Petros Court
- 2 Lanfranc
- 3 Pin Hill
- 4 St George's and Students' Union
- 5 Holmes Court
- 6 Dover Street
- 7 Vernon Place
- 8 Parham Village

Accommodation Office and Events

Going into your second and third years, there will be events and advice providing guidance to finding your next home. The city has a wealth of private accommodation. We recommend students looking for private rental do this through accredited schemes. We advise students not to sign up too early. Look out for accommodation events on Canterbury Christ Church University's and Students' Union websites.



0480023



Canterbury Christ Church University is signed up to The Universities UK Code of Practice for the Management of Student Housing. The Code assists those managing student accommodation by setting out the main elements of good management practice.



For advice and guidance
ask the i-zone team on **01227 922222**
or email i-zone@canterbury.ac.uk

canterbury.ac.uk/accommodation

