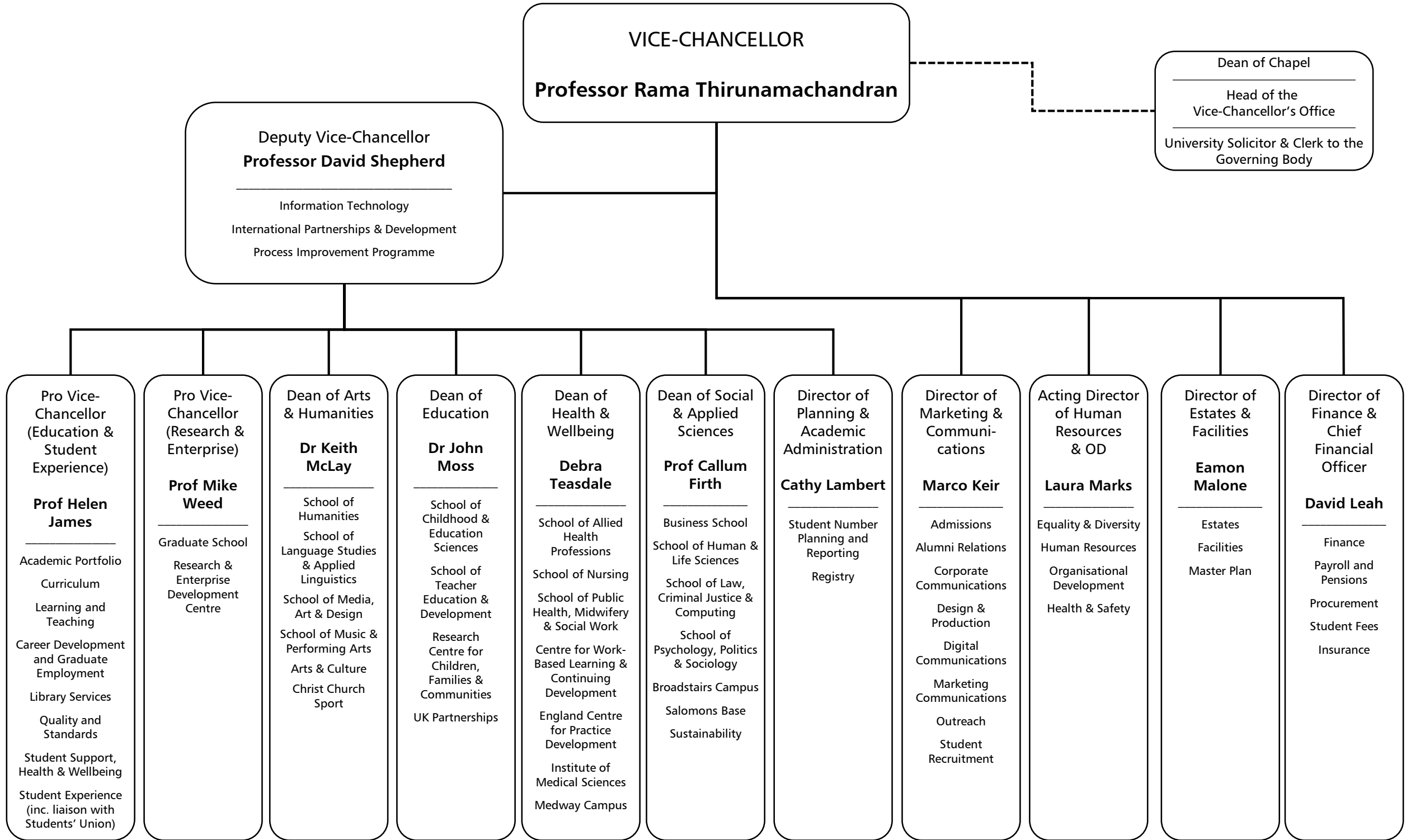


# CANTERBURY CHRIST CHURCH UNIVERSITY: SENIOR MANAGEMENT TEAM STRUCTURE



**VICE-CHANCELLOR**  
**Professor Rama Thirunamachandran**

**Deputy Vice-Chancellor**  
**Professor David Shepherd**

---

Information Technology  
International Partnerships & Development  
Process Improvement Programme

Dean of Chapel  
Head of the Vice-Chancellor's Office  
University Solicitor & Clerk to the Governing Body

**Pro Vice-Chancellor (Education & Student Experience)**  
**Prof Helen James**

---

Academic Portfolio  
Curriculum  
Learning and Teaching  
Career Development and Graduate Employment  
Library Services  
Quality and Standards  
Student Support, Health & Wellbeing  
Student Experience (inc. liaison with Students' Union)

**Pro Vice-Chancellor (Research & Enterprise)**  
**Prof Mike Weed**

---

Graduate School  
Research & Enterprise Development Centre

**Dean of Arts & Humanities**  
**Dr Keith McLay**

---

School of Humanities  
School of Language Studies & Applied Linguistics  
School of Media, Art & Design  
School of Music & Performing Arts  
Arts & Culture  
Christ Church Sport

**Dean of Education**  
**Dr John Moss**

---

School of Childhood & Education Sciences  
School of Teacher Education & Development  
Research Centre for Children, Families & Communities  
UK Partnerships

**Dean of Health & Wellbeing**  
**Debra Teasdale**

---

School of Allied Health Professions  
School of Nursing  
School of Public Health, Midwifery & Social Work  
Centre for Work-Based Learning & Continuing Development  
England Centre for Practice Development  
Institute of Medical Sciences  
Medway Campus

**Dean of Social & Applied Sciences**  
**Prof Callum Firth**

---

Business School  
School of Human & Life Sciences  
School of Law, Criminal Justice & Computing  
School of Psychology, Politics & Sociology  
Broadstairs Campus  
Salomons Base  
Sustainability

**Director of Planning & Academic Administration**  
**Cathy Lambert**

---

Student Number Planning and Reporting  
Registry

**Director of Marketing & Communications**  
**Marco Keir**

---

Admissions  
Alumni Relations  
Corporate Communications  
Design & Production  
Digital Communications  
Marketing Communications  
Outreach  
Student Recruitment

**Acting Director of Human Resources & OD**  
**Laura Marks**

---

Equality & Diversity  
Human Resources  
Organisational Development  
Health & Safety

**Director of Estates & Facilities**  
**Eamon Malone**

---

Estates  
Facilities  
Master Plan

**Director of Finance & Chief Financial Officer**  
**David Leah**

---

Finance  
Payroll and Pensions  
Procurement  
Student Fees  
Insurance